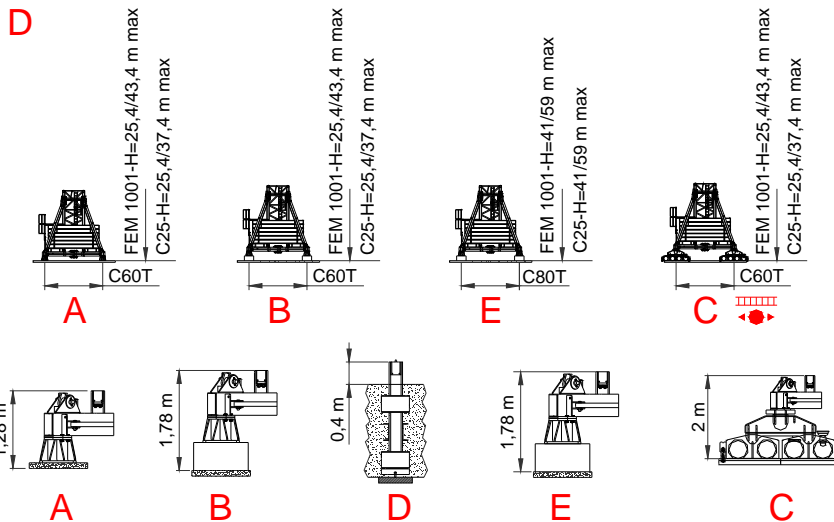
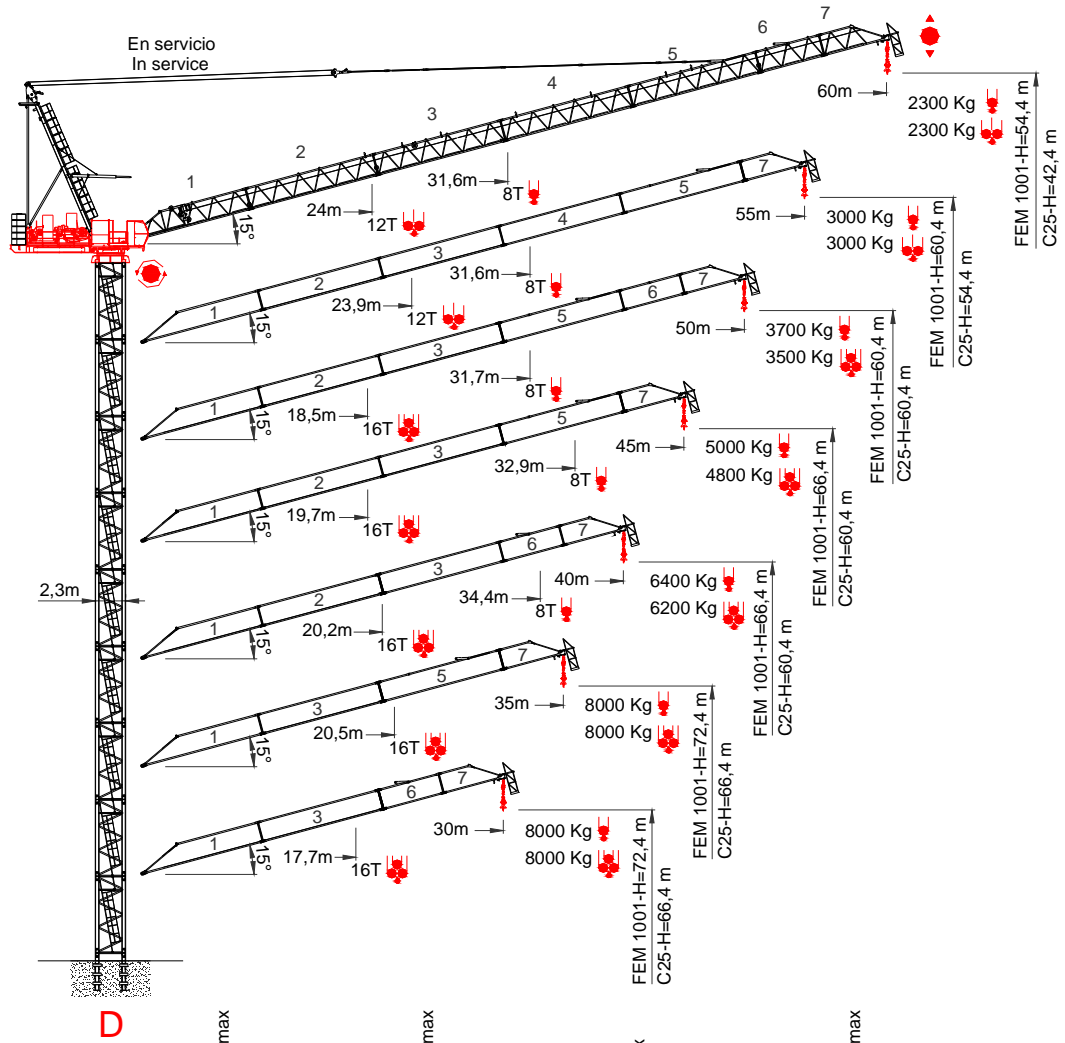









1. TECHNICAL SHEET



1.1. LOAD DIAGRAMS

60 m	10	15	20	25	30	31,6	35	40	45	50	55	60	m	
	8000	8000	8000	8000	8000	8000	6879	5500	4434	3583	2888	2300	Kg	
	10	15	20	25	30	30,7	35	40	45	50	55	60	m	
	8000	8000	8000	8000	8000	8000	6532	5197	4165	3342	2669	2100	Kg	
	10	15	20	24	25	30	35	40	45	50	55	60	m	
	12000	12000	12000	12000	11371	8743	6887	5506	4437	3585	2889	2300	Kg	
55 m	10	15	20	23,8	25	30	35	40	45	50	55	60	m	
	8000	8000	8000	8000	8000	8000	6940	5586	4539	3702	3000	Kg		
	10	15	20	25	30	30,8	35	40	45	50	55	60	m	
	8000	8000	8000	8000	8000	8000	6622	5309	4293	3481	2800	Kg		
	10	15	20	23,9	25	30	35	40	45	50	55	60	m	
	12000	12000	12000	12000	11346	8768	6947	5591	4541	3703	3000	Kg		
50 m	10	15	20	23	25	30	35	40	45	50	55	60	m	
	8000	8000	8000	8000	8000	8000	6940	5586	4539	3702	3000	Kg		
	10	15	20	23,4	25	30	35	40	45	50	55	60	m	
	8000	8000	8000	8000	8000	8000	6622	5309	4293	3481	2800	Kg		
	10	15	20	23,4	25	30	35	40	45	50	55	60	m	
	12000	12000	12000	12000	11203	8607	6773	5408	4352	3508	2800	Kg		
45 m	10	15	20	25	30	31,7	35	40	45	50	55	60	m	
	8000	8000	8000	8000	8000	8000	6923	5591	4558	3700	Kg			
	10	15	20	25	30	30,3	35	40	45	50	55	60	m	
	8000	8000	8000	8000	8000	8000	6634	5338	4334	3500	Kg			
	10	15	20	23,4	25	30	35	40	45	50	55	60	m	
	12000	12000	12000	12000	11258	8721	6928	5593	4559	3700	Kg			
40 m	10	15	20	23,4	25	30	35	40	45	50	55	60	m	
	8000	8000	8000	8000	8000	8000	6923	5591	4558	3700	Kg			
	10	15	20	23,4	25	30	35	40	45	50	55	60	m	
	8000	8000	8000	8000	8000	8000	6634	5338	4334	3500	Kg			
	10	15	20	23,4	25	30	35	40	45	50	55	60	m	
	12000	12000	12000	12000	11100	8548	6746	5404	4364	3500	Kg			
35 m	10	15	20	25	30	32,9	35	40	45	50	55	60	m	
	8000	8000	8000	8000	8000	8000	7499	6122	5000	Kg				
	10	15	20	25	30	32,3	35	40	45	50	55	60	m	
	8000	8000	8000	8000	8000	8000	7238	5895	4800	Kg				
	10	15	20	24,7	25	30	35	40	45	50	55	60	m	
	12000	12000	12000	12000	11969	9352	7502	6124	5000	Kg				
30 m	10	15	20	24	25	30	35	40	45	50	55	60	m	
	8000	8000	8000	8000	8000	8000	7666	6200	Kg					
	10	15	20	25	30	33,5	35	40	45	50	55	60	m	
	8000	8000	8000	8000	8000	8000	7666	6200	Kg					
	10	15	20	24	25	30	35	40	45	50	55	60	m	
	12000	12000	12000	12000	12000	9789	7899	6400	Kg					

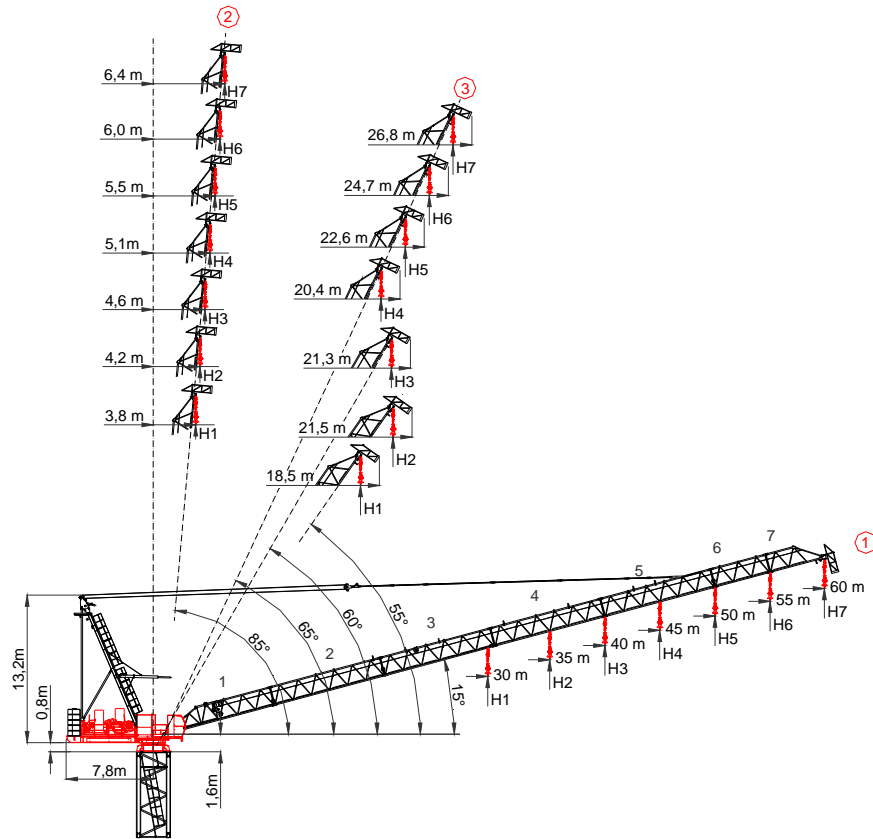


IMPORTANT

The load curve diagram reflects the maximum net load that the Luffing crane can hoist. In case any auxiliary lifting or apprehension component (chains, carrying pallets, etc...) would be used, the weights shall be reduced to the net load that can be lifted by the Luffing crane for each jib length.

This table has been calculated taking in consideration for IV falls and a 48 meters high tower. For higher tower heights configurations, the lifting capacity has to be reduced according to the extra lifting rope weight.

1.2. MECHANISMS



- ① Pluma maxima - Portée maxi - Sbraccio massimo - Maximum jib - Max. Ausleger
- ② Pluma min. en servicio - Portée min. in service - Sbraccio min. in servizio - Mindst. Ausleger in Betrieb
- ③ Pluma min. fuera de servicio - Portée min. hors service - Sbraccio min. fuori servizio - Mindst. Ausleger ausser Betrieb

90 Hp (67Kw)-INV LEBUS 700m	H.B.G 350m Ø16			H.B.G 230m Ø16				
	m/min	0-39,8	0-120	0-159	0-26,5	0-80	0-106	
	Kg	8000	2300	1450	12000	3450	2150	
	Kw	67	67	67	67	67	67	
		H.B.G 175m Ø16						
		0-19,9	0-60	0-79				
		16000	4600	2900				
		67	67	67				
1,7 min. de 15° a 85° 1,7 minutes from 15° to 85°								
		Kw						
		r.p.m						
		Kw						
		m/min						
		Kw						
		2000/14/CEE 2005/88/CEE		2006/95 /CEE		400 V 50 Hz 60 Hz		100m 4x95mm ²
		450 kVA		150 KW				

- ↑ Elevación / Hoisting / Heben / Levage / Sollevamento
- ↗ Elevación de pluma / Luffing / Ausleger-Einziehen / Relevage / Brandeggio
- ↻ Orientación / Slewing / Schwenken / Orientation / Rotazione
- Traslación / Travelling / Schienenfahren / Translation / Traslazione
- Cable / Rope / Seil / Câble / Funne