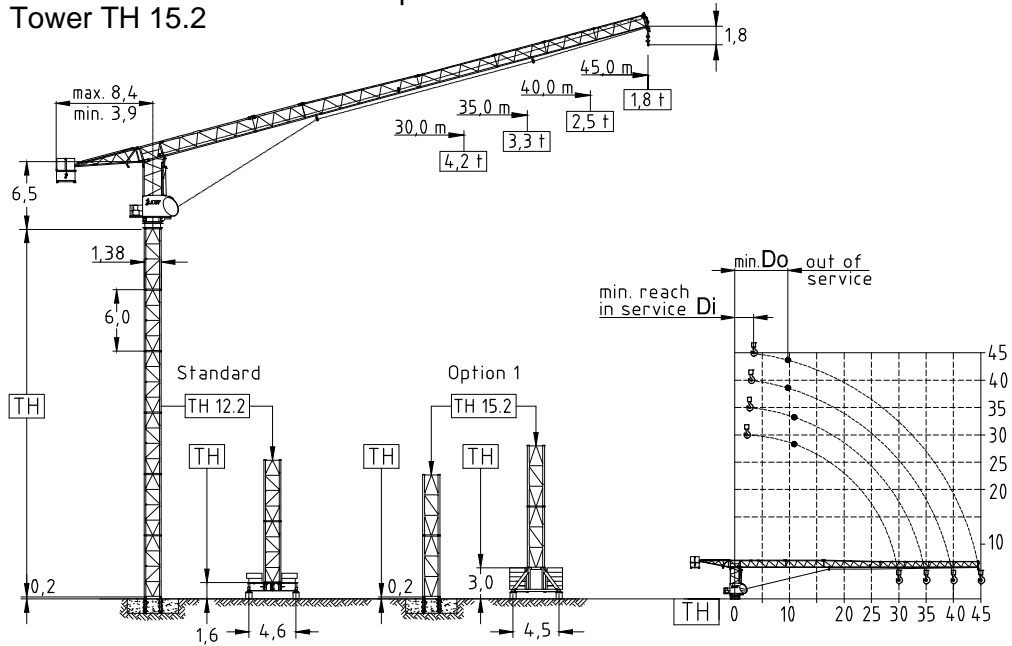


JTL118.6 - 6,0 ton

Tower TH 12.2 1/2-fall rope
Tower TH 15.2

Topless Luffing crane



Jib (m)	Jib reach (m)		Tower heights all data in (m)			
			Standard Tower		Option 1	
	Di	Do	Foundat. TH 12.2	Chassis FC 4,6-12.2	Foundat. TH 15.2	Chassis UC 4,5-15.2
30,0	2,4	10,9	33,0	30,0	39,0	36,0
35,0	2,8	10,9	30,0	30,0	36,0	33,0
40,0	3,2	9,6	27,0	27,0	33,0	30,0
45,0	3,6	9,6	24,0	24,0	30,0	27,0

EN 14439 : 2008
WIND C 25
ISO 9001 : 2008

Transport		
	Truck	Cont.
Top crane	5	6
Tower 2 unit	1	1
Climbing	1	1
Chassis	1	1

Jib		max. Load	Jib reach								
m	rope		t	m	18	20	22	25	30	35	40
45,0	⊙	3,0	27,9	3,00	3,00	3,00	3,00	2,78	2,36	2,04	1,80
	⊙	6,0	14,3	4,70	4,20	3,79	3,30	2,70	2,27	1,95	1,70
40,0	⊙	3,0	33,7	3,00	3,00	3,00	3,00	3,00	2,88	2,50	
	⊙	6,0	17,1	5,70	5,10	4,61	4,02	3,30	2,79	2,40	
35,0	⊙	3,0	35,0	3,00	3,00	3,00	3,00	3,00	3,00		
	⊙	6,0	20,0	6,00	6,00	5,43	4,74	3,90	3,30		
30,0	⊙	3,0	30,0	3,00	3,00	3,00	3,00				
	⊙	6,0	21,4	6,00	6,00	5,84	5,10	4,20			

Hoist 30,0 kW FI							
⊙	t	0,9	1,1	1,4	1,7	2,5	3,0
	m/min	124	112	100	90	72	34
⊙	t	1,8	2,2	2,8	3,4	5,0	6,0
	m/min	62	56	50	45	36	17
Hook height	1-fall	300,0 m					
	2-fall	150,0 m					

Hoist 37,0 kW FI							
⊙	t	0,8	1,0	1,5	2,0	2,5	3,0
	m/min	184	168	142	116	76	48
⊙	t	1,6	2,0	3,0	4,0	5,0	6,0
	m/min	92	84	71	58	38	24
Hook height	1-fall	540,0 m					
	2-fall	270,0 m					

Motor	11,0 kW FI	1 x 3,0 kW	2 x 5,0 kW
t/v	2,5 min	0,77 rpm	25,0 m/min
Power requirement Upper part		Hoist 30,0 kW	65 kVA
		Hoist 37,0 kW	80 kVA

Power requirement
400V (±10%) - 50Hz

Counter weight	
Block 1	2 x 4,4 t
Block 2	1 x 7,2 t
Total	16,0 t

Ropes		
	D (mm)	N/mm ²
Hoist	14,0	1960

JOST Cranes GmbH & Co. KG
Bretonischer Ring 18
85630 Grasbrunn / Munich
Germany
Fon +49-89-454525-18
Cell +49-89-454525-63
Mail info@jostcranes.de
Web www.jostcranes.de